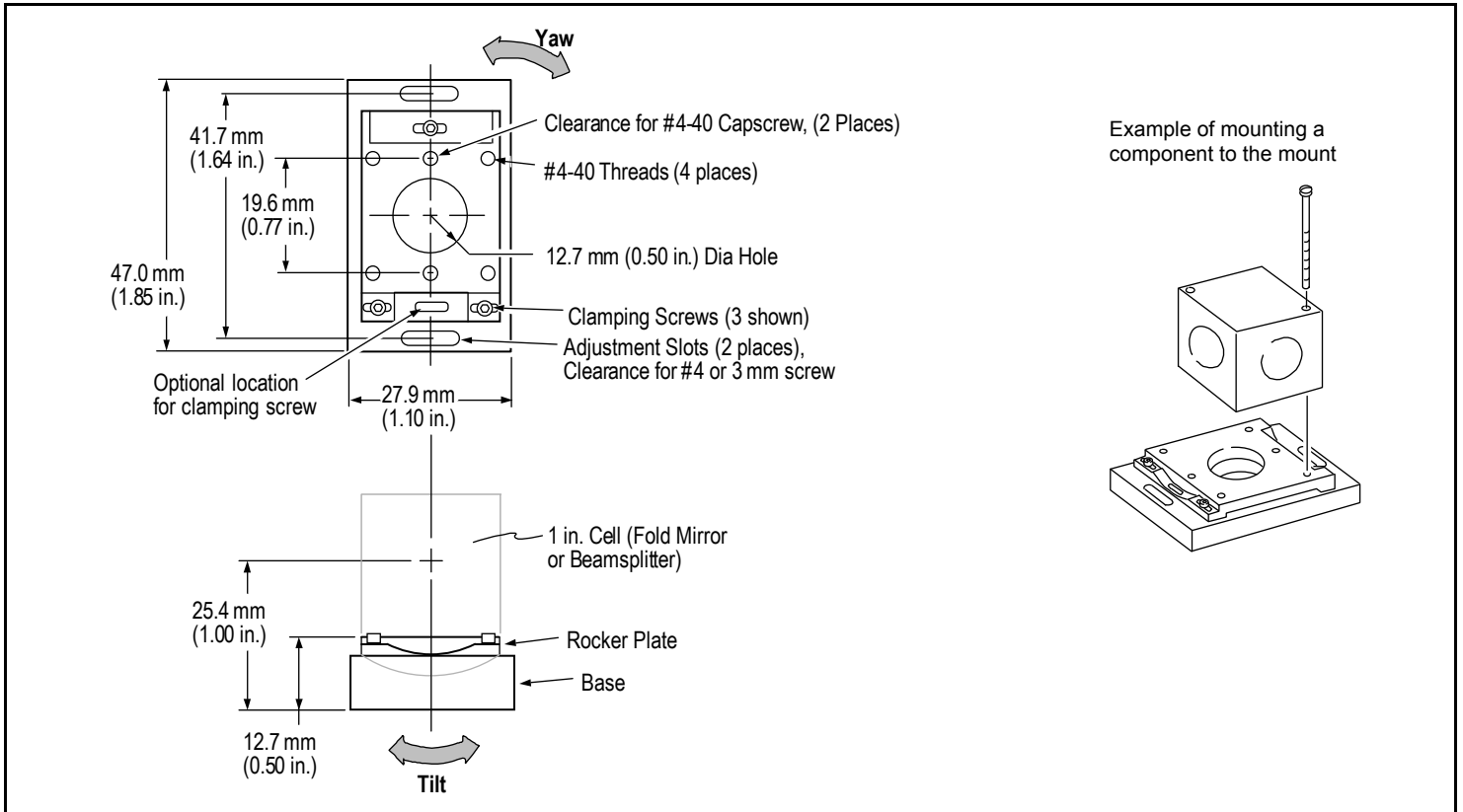


ZMI Mirror and Beamsplitter Mount

P/N	DESCRIPTION	ANGULAR ADJUSTMENT		
6191-0445-01	Mount for standard 1-inch square optical components	Yaw	± 8 degrees	
PHYSICAL CHARACTERISTICS		Tilt	± 4 degrees (when used with 3 clamping screws)	
			± 8 degrees (when used with 2 clamping screws in center slots of Rocker Plate)	
		Dimensions	See Figure	
		Weight	86 grams (3.0 oz)	
Materials	Magnetic stainless steel			
Function	Use to mount optical components with 1-inch square cells			



Securing the mount:

1. Attach the mount to the mounting surface with a #4 or 3 mm socket screw and two washers through each mounting slot. Note that 2 standard flat washers (included) must be used between the adjustment slot and the screw head.
2. Tighten the screws to 80 in-oz (0.6 N•m) maximum.

Mounting component to the mount:

1. Position the optical component to the mount so the reflected beam rotates about the input laser beam.
2. Attach the component to the mount with two #4-40 screws.
3. Tighten the screws to 40 in-oz (0.3 N•m) maximum.

Adjusting component location:

1. *To adjust for Yaw* -
 - a. Slightly loosen mounting screws and rotate entire mount.
 - b. Tighten the mounting screws to 80 in-oz (0.6 N•m) maximum.
2. *To adjust for Tilt* -
 - a. Slightly loosen the single clamping screw.
 - b. Alternately tighten and loosed the paired clamping screws to rotate the component in the appropriate direction.
 - c. Tighten the three clamping screws.